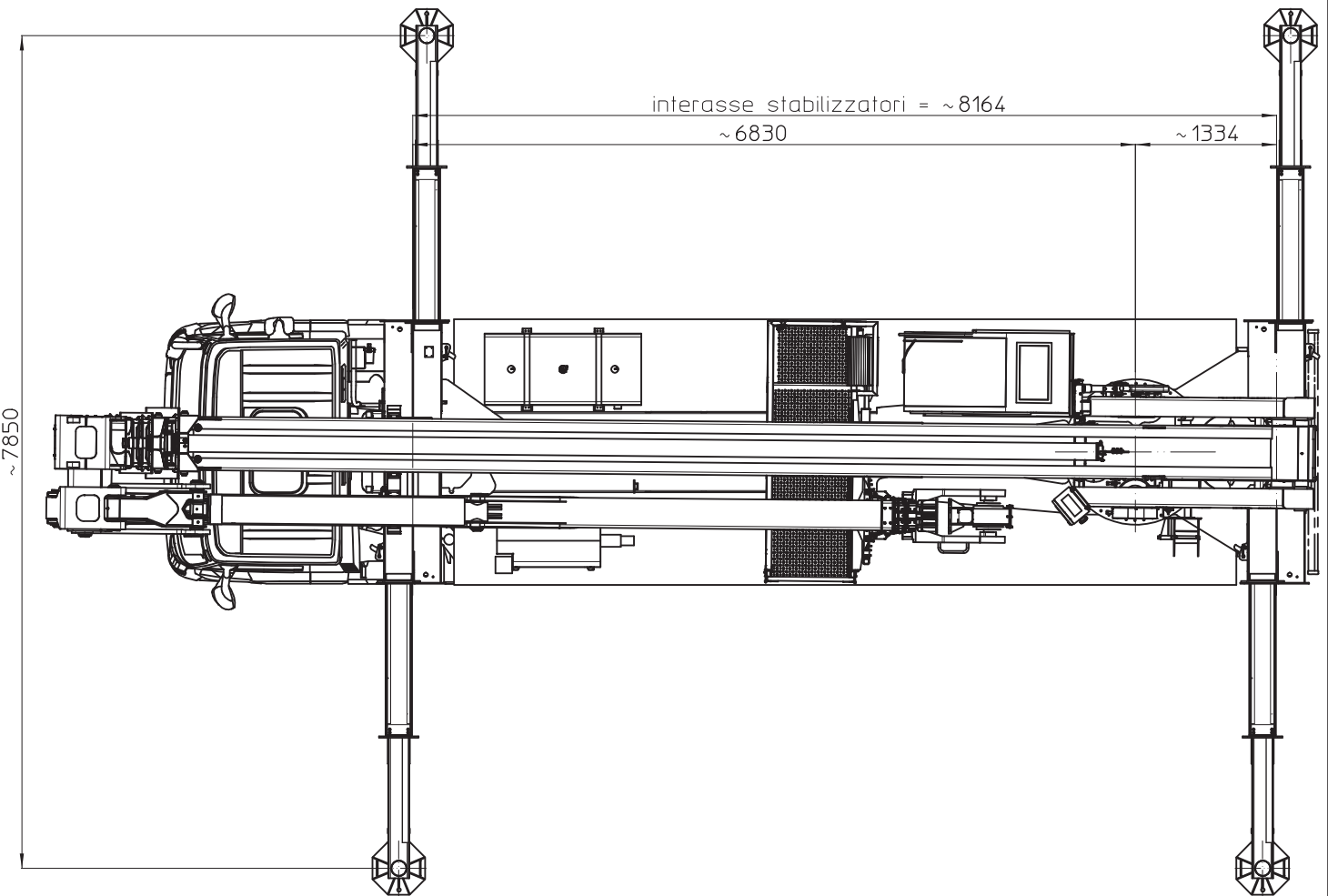
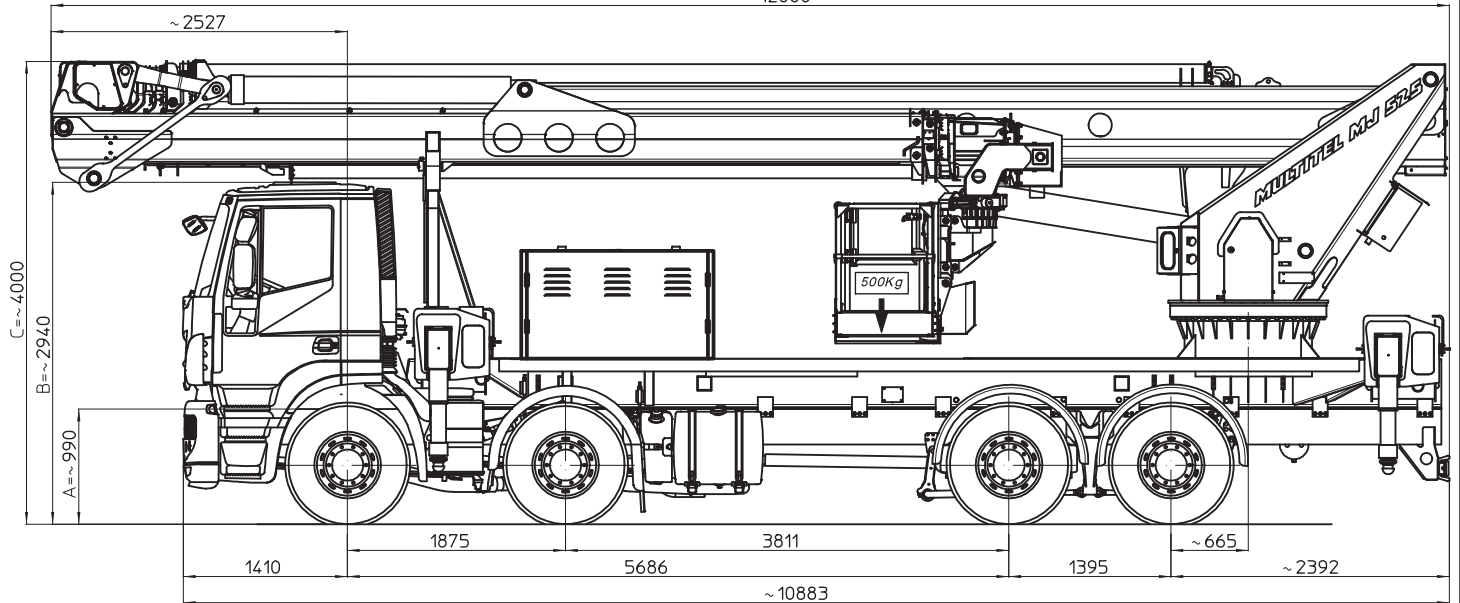


MULTITEL MJ525

Iveco Stralis PTT=32000kg

~12000



I - Le quote riportate in disegno sono indicative e possono subire variazioni. In particolare le quote A-B sono relative alle dimensioni dell'autocarro, quindi devono essere verificate sullo stesso. La quota C (altezza totale) e' subordinata alle quote A-B e non comprende eventuali parti flessibili.

F - Les cotes indiquée dans le dessin sont indicatives et peuvent subir des variations. En outre les cotes A-B sont relatives aux dimensions du porteur, donc elles doivent être vérifiées sur le porteur même. La cote C (hauteur totale) est subordonnée aux cotes A-B est indiquée hors flexibles.

E - The dimensions shown in the drawing are an indication and may undergo changes. Further the dimensions A-B are related to the truck sizes, therefore they must be verified. The dimension C (total height) is subject to A-B and does not include hoses.

D - Die Maße, die in der Zeichnung gezeigt werden, sind eine Anzeige und können Änderungen durchmachen. Die Abmessungen A-B betreffen die Fahrzeugmasse, daher sollen sie geprüft werden. Die Abmessung C (Gesamthöhe) hängt von A-B Abmessungen ab, die schlauche sind ausgeschlossen.

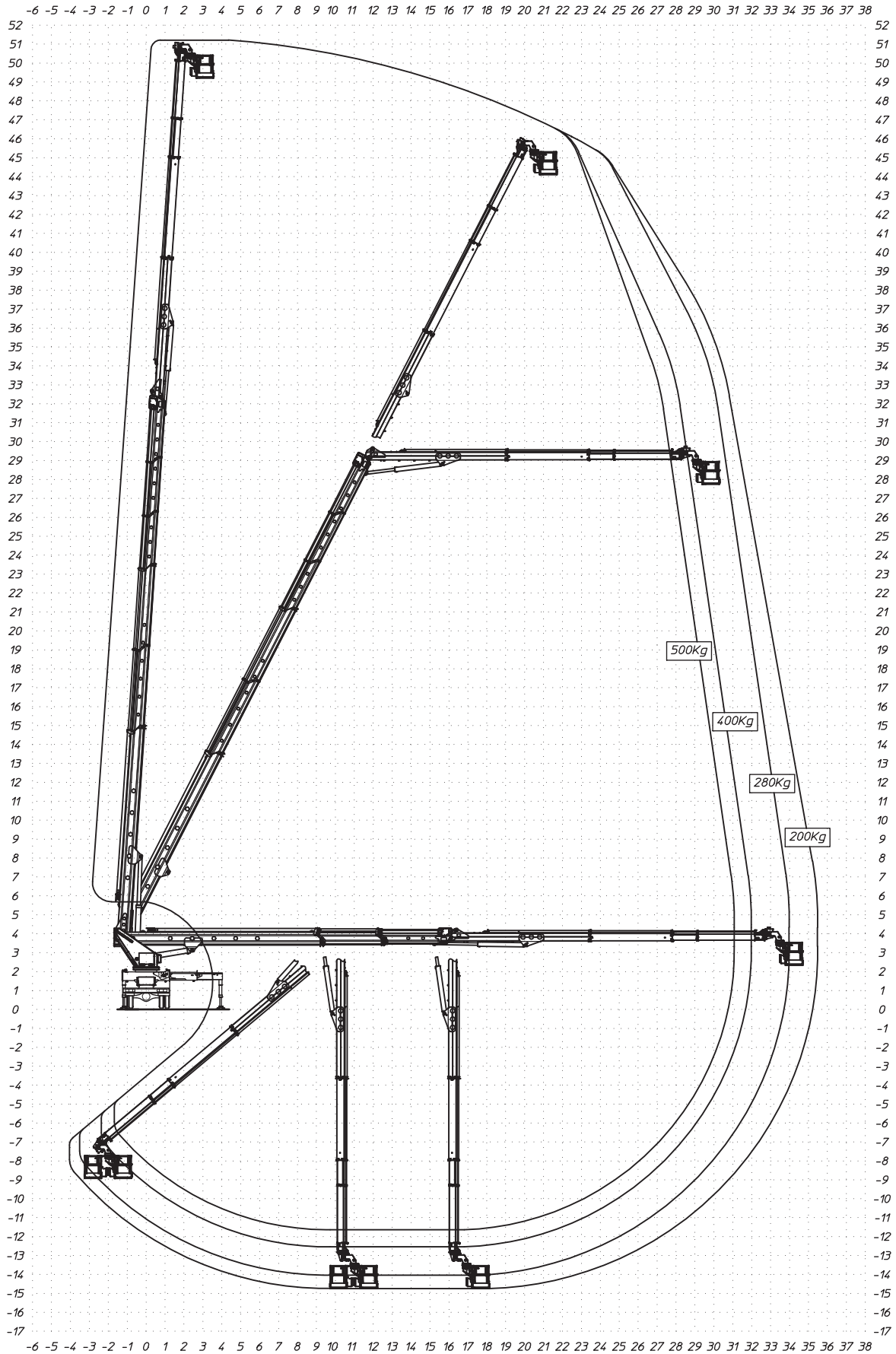
D63600

| Ente | Rev. | Descrizione | Data | Dis. | Contr. | Ap.AQ |
|--|------|-------------|----------|------|--------|-------|
| MRK | 0 | EMISSIONE | 22/06/18 | A.G. | | |
| INGOMBRO - SCHEDA 54/1 - Rev. 0 - 15/12/00 | | | | | | |

MULTITEL MJS25

| Ente | Rev. | Descrizione | Data | Dis. | Contr. | Ap.AQ |
|---|------|-------------|----------|------|--------|-------|
| MRK | 0 | EMISSIONE | 20/06/18 | A.G. | | |
| DIAGRAMMA - SCHEDA 54/2 - Rev. 0 - 15/12/00 | | | | | | |

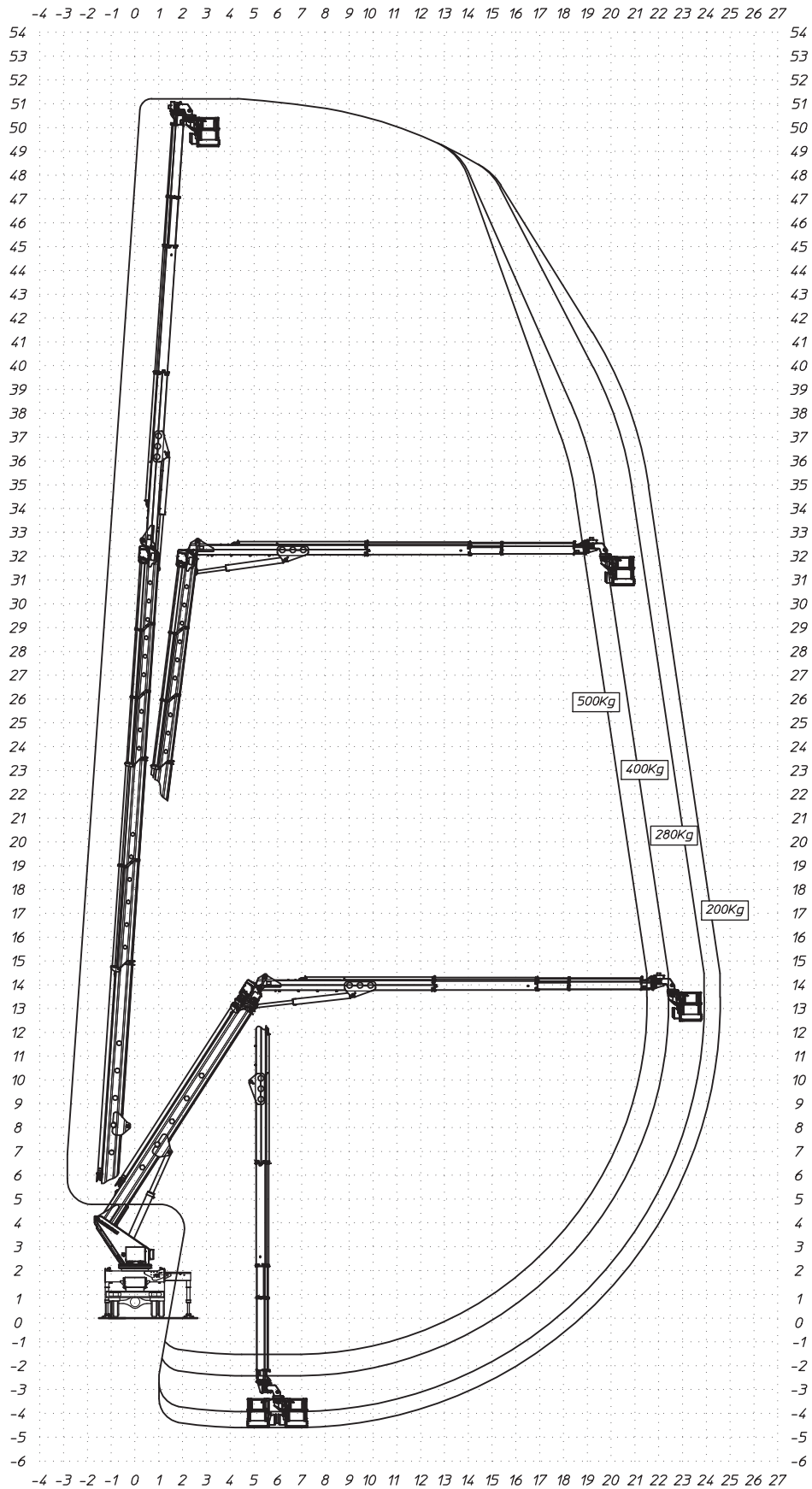
D63592-M



MULTITEL MJS25

D63599-M

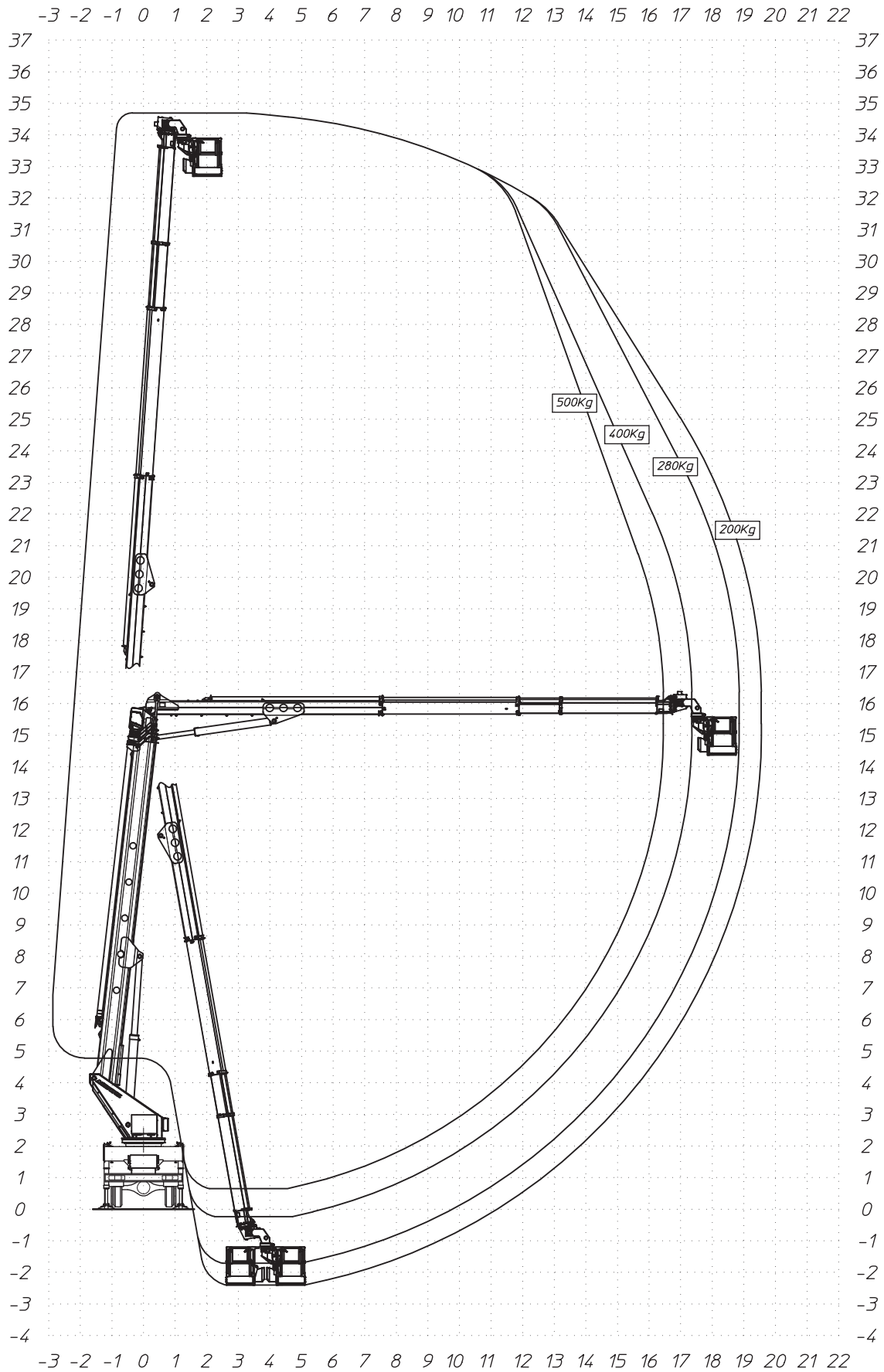
| Ente | Rev. | Descrizione | Data | Dis. | Contr. | Ap.AQ |
|---|------|-------------|----------|------|--------|-------|
| MRK | 0 | EMISSIONE | 22/06/18 | A.G. | | |
| DIAGRAMMA - SCHEDA 54/2 - Rev. 0 - 15/12/00 | | | | | | |



MULTITEL MJ525

| Ente | Rev. | Descrizione | Data | Dis. | Contr. | Ap.AQ |
|---|------|-------------|----------|------|--------|-------|
| MRK | 0 | EMISSIONE | 21/06/18 | A.G. | | |
| DIAGRAMMA - SCHEDA 54/2 - Rev. 0 - 15/12/00 | | | | | | |

D63596-M



STABILIZZAZIONE AUTOCARRI PTT < 32 TON.

LARGHEZZA MASSIMA 2540mm.

STABILISATION VEHICULES PTAC < 32 TON.

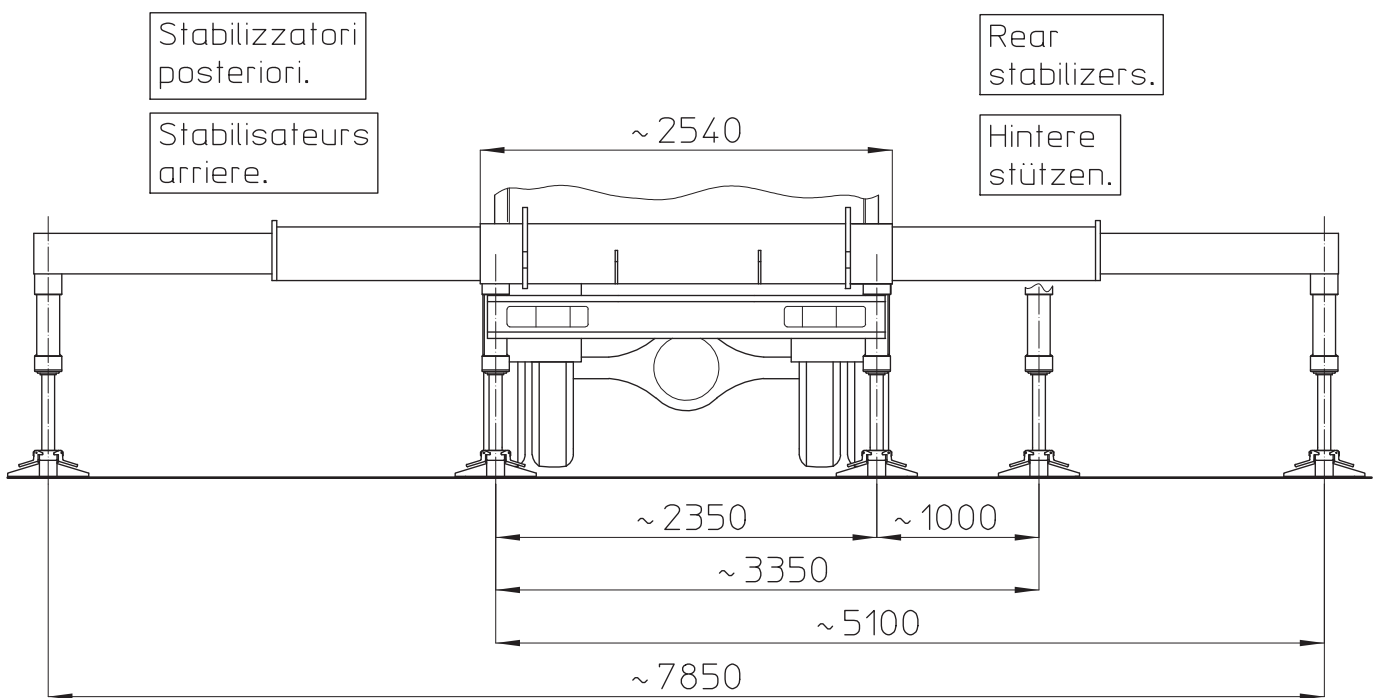
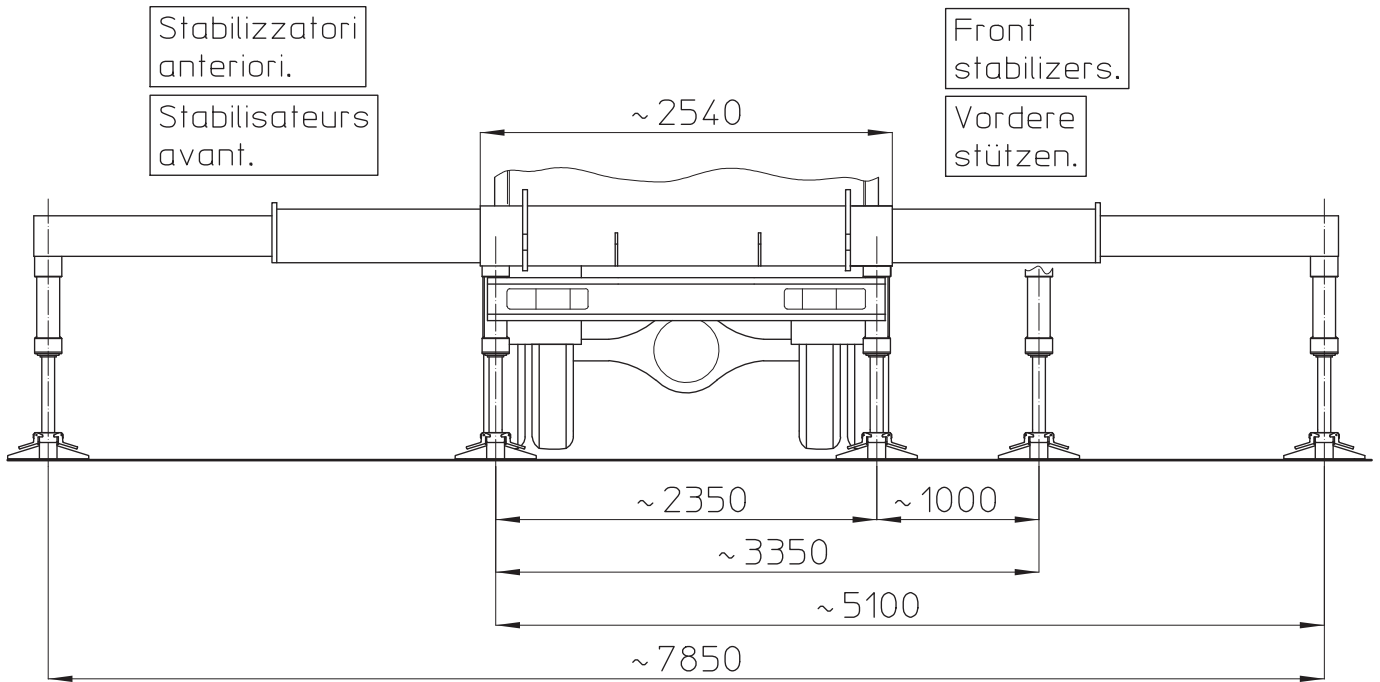
LARGEUR MAXI 2540mm.

TRUCK STABILISATION FOR GVW < 32 TON.

AND MAX WIDTH 2540mm.

ABSTUTZUNG FUR FAHRZEUG MIT GES. GEWICHT < 32 TON.

UND MAX. BREITE 2540mm.



| Ente | Rev. | Descrizione | Data | Dis. | Contr. | Ap.AQ |
|--|------|-------------|----------|------|--------|-------|
| MRK | 0 | EMISSIONE | 02/04/15 | L.B. | | |
| INGOMBRO - SCHEDA 54/1 - Rev. 0 - 15/12/00 | | | | | | |

D53618