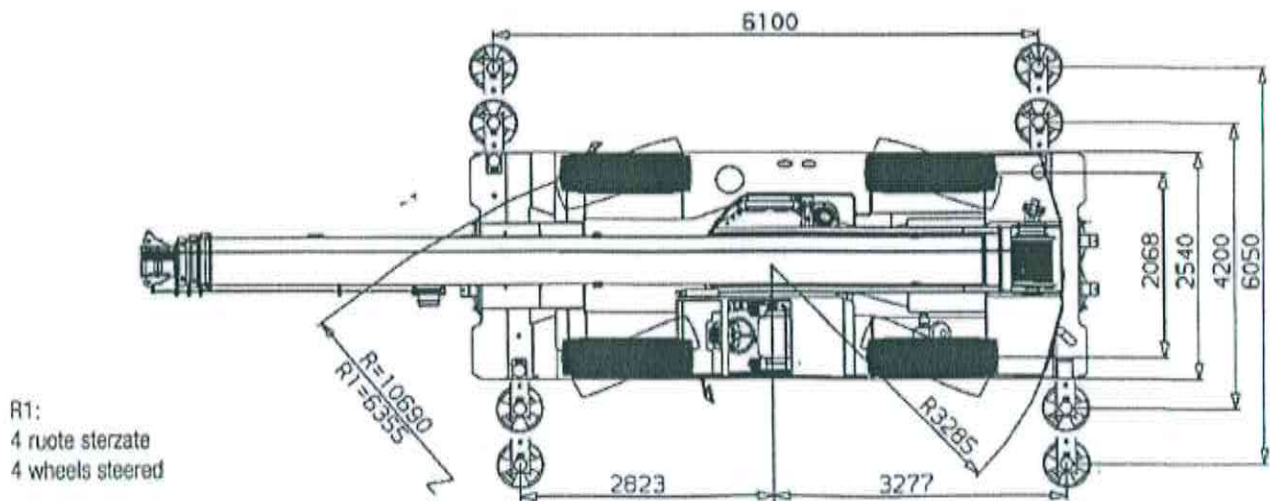
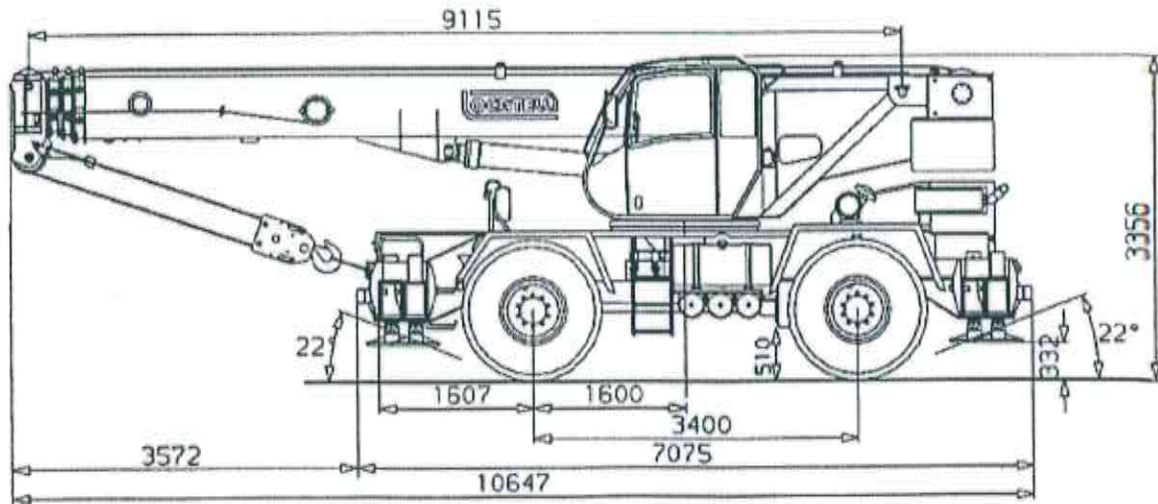
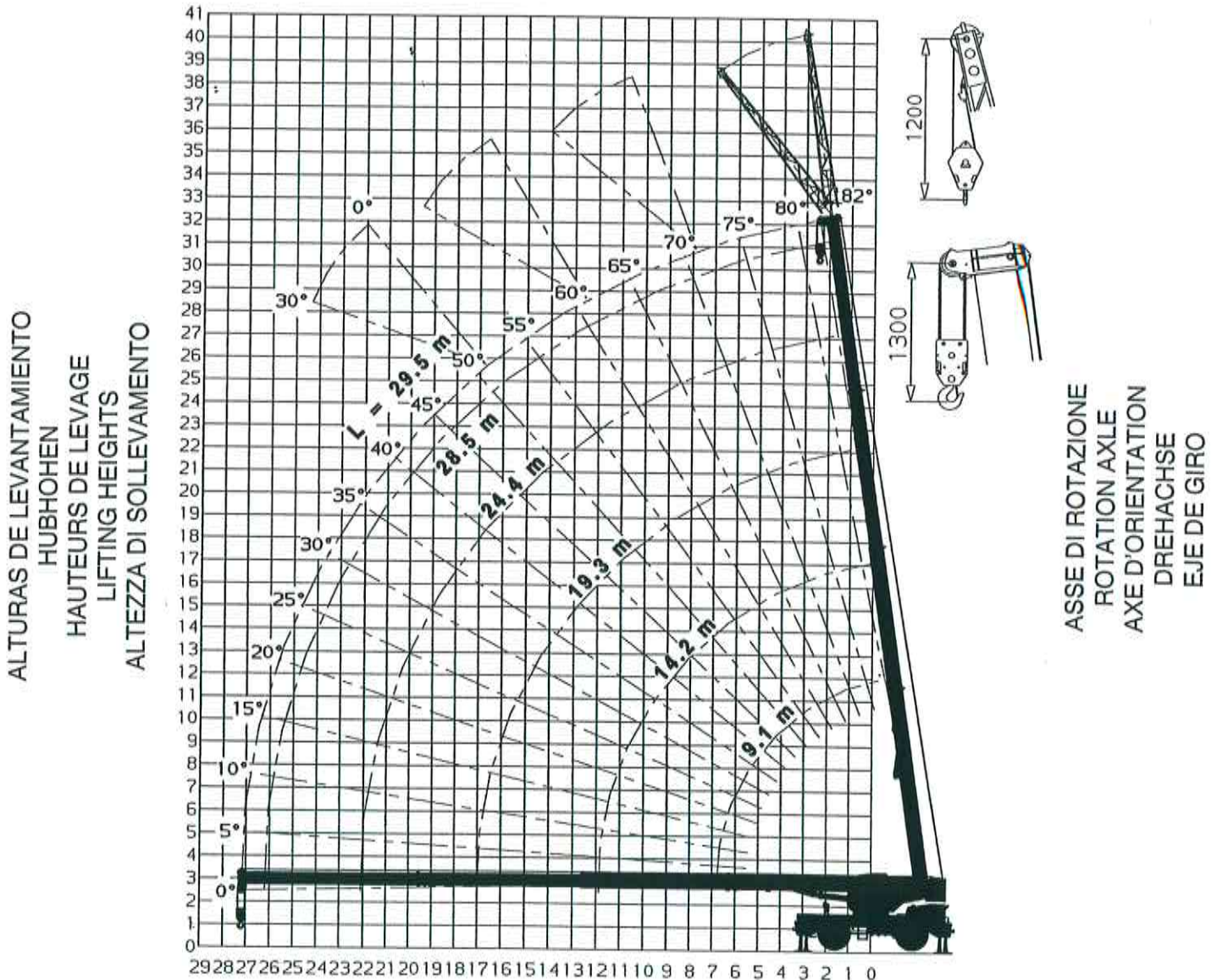


## LOCATELLI GRIL 8400T

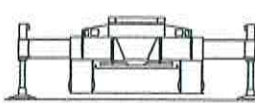

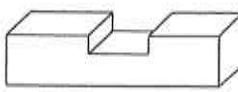
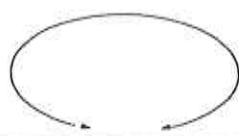
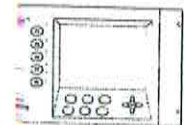
### SCHEMA DIMENSIONALE

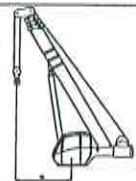


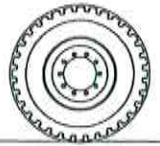

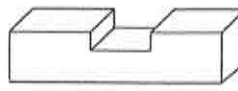
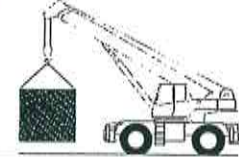
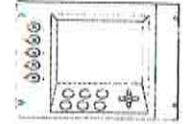
**DIAGRAMMA DI LAVORO CON TRALICCIO DA 8 m – 360°**  
**WORKING DIAGRAM WITH 8 m LATTICE EXTENSION – 360°**  
**DIAGRAMME DE TRAVAIL AVEC FLECHETTE DE 8 m – 360°**  
**ARBEITSBEREICH MIT 8 m - SPITZE – 360°**  
**DIAGRAMA DE ALCANCES CON PLUMIN DE 8 m – 360°**





				
6,05 m x 6,10 m	9,1 m – 29,5 m	5000 kg	360°	COD 1

	PORTATE SU STABILIZZATORI IN kg – 360°					
	LUNGHEZZA BRACCIO PRINCIPALE					
	9,1 m	14,2 m	19,3 m	24,4 m	28,5 m	29,5 m
3 m	35000	19100	17100			
3,5 m	32700	19500	17500			
4 m	30400	19900	17500	13000		
4,5 m	27600	20400	17500	13000	8900	
5 m	24700	19000	17000	13000	9000	8000
6 m	20200	18200	16000	12000	9000	8000
7 m		15800	15900	11500	9000	8000
8 m		13000	12900	10500	8500	8000
9 m		10900	10900	9500	7800	7700
10 m		8800	8800	8600	7000	7000
11 m		7400	7400	7400	6400	6300
12 m		6400	6400	6400	5800	5700
13 m			5700	5700	5300	5200
14 m			5100	5100	4800	4700
15 m			4300	4300	4300	4300
16 m			3800	3800	3800	3800
17 m			3500	3500	3500	3500
18 m				3100	3100	3100
19 m				2700	2700	2800
20 m				2500	2500	2600
21 m				2200	2200	2200
22 m				1700	1800	1800
23 m					1800	1800
24 m					1600	1600
25 m					1500	1500
26 m					1300	1400
27 m						1200

				
10 bar 16.00 R25	9,1 m – 19,3 m	5000 kg	3 km/h	COD 5

	PORTATE SU PNEUMATICI IN kg		
	LUNGHEZZA BRACCIO PRINCIPALE		
	9,1 m	14,2 m	19,3 m
3 m	18400	18400	17100
3,5 m	15000	15000	15000
4 m	12500	12800	12900
4,5 m	10400	10700	10800
5 m	8800	9100	9200
6 m	6800	7100	7200
7 m		5600	5700
8 m		4500	4600
9 m		3700	3800
10 m		3100	3200
11 m		2600	2700
12 m			2300
13 m			1900
14 m			1600
15 m			1400